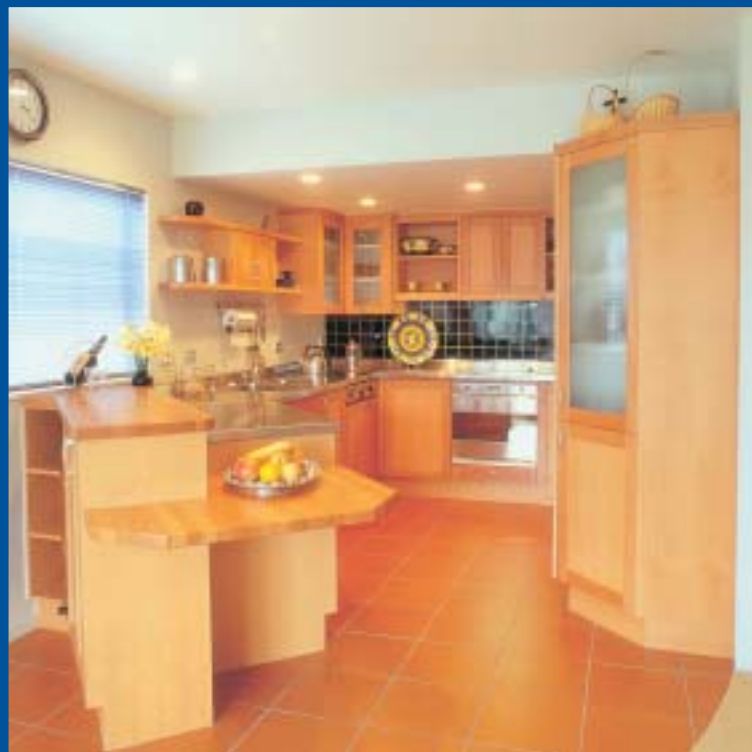


Arborline Cabinet Doors





Standard Timber Doors

For timeless character and fashionability it is hard to go past the natural beauty of timber. It has been a popular choice for kitchen finishes for the last 100 years and you can be assured it will be for many more to come.

Arborline produce a vast range of doors in any number of exciting styles, using almost any timber currently available.



RPSA Heart Rimu



RP DA Island Kauri



RPSQ Tasmanian Oak



RPSQ KnottyMacrocarpa



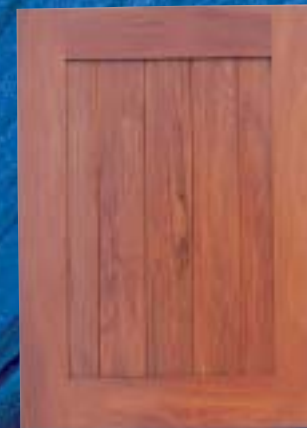
FPSQ Stop Bevel Saligna



VPSQ Coloured Rimu



VPVR Heart Rimu



RPSQ American Oak



TGVN Pine

Arborline solid timber doors are manufactured using a combination of traditional craft techniques and modern technology and we pride ourselves on producing doors of the very highest quality.



In addition to our standard range, Arborline are renowned for producing customized doors to a client's design and specifications.



TGV Recycled Rimu



RPSQ American Cherry



RPSQ Kwila



RPSQ New Zealand Ash



DAFP Clear Macrocarpa



VPSQ European Beech



DARP Pale Rimu



FPSQ Jarrah



RPSQ Macrocarpa



A number of choices are available other than solid wood doors. Arborline also produce frame only for glass, latticed doors and a timber frame with Melteca panel door which provides a 'coloured' option and is very popular.



Melteca Panel



Frame only



4 lite



Paint Finish

Drawer Bank



Pelmets

A range of pelmets, cornice and mouldings are available to complement your door order or to add a timber flavour to your kitchen.



Colonial



Classic



Bullnose (Rebated)



Sharknose (Rebated)



Any Timber

Arborline doors are made without nails or screws, to any size and from most popular quality timbers: Heart and Coloured Rimu, Tawa, Pine, American White Oak and many more.

Accessories

Oven fronts, shelf units and chopping blocks are also available on request.

Moulded Outside Edges



A



S



E



B



T



Scallop

Panel Mould No's



1



2



3



4



5

Inside Edge Moulding



Arborline



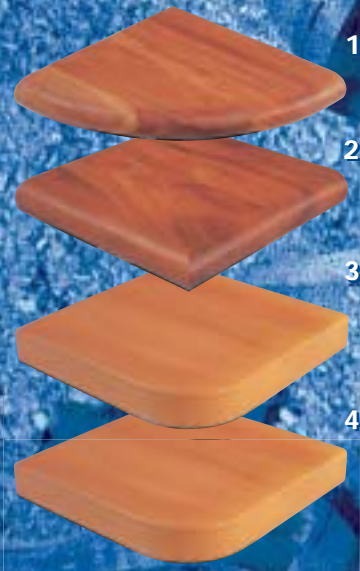
Square



English



Timber Tops



To complement our range of timber doors and cabinetry, Arborline now produce a range of timber tops in a variety of native and exotic timbers. Bench and servery tops, bar tops and counters can all be manufactured to your specifications.

Examples displayed

- | | |
|---------------|--------------------------|
| 1. Heart Rimu | 2. New Zealand Blackwood |
| 3. Kauri | 4. European Beech |

By utilising the latest technology we can accommodate almost any design. Curved, shaped and cutouts to any dimensions are possible with edges finished in a number of styles.



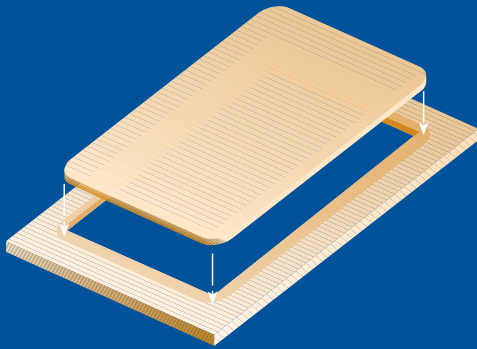
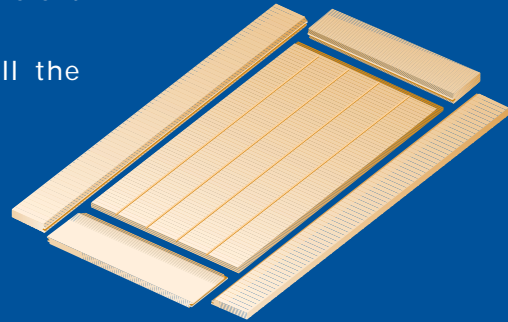
Supplied sanded, ready for finishing, Arborline produce an affordable and quality alternative to some of the other tops on the market, yet still retaining the natural appeal of timber.

MUF Doors



Arborline also produce MUF doors by using several different methods.

A frame and panelled design is available in all the aforementioned timber styles.



Another option recently made available is a two piece design where the frame is routed from a single piece of MUF and a panel is fitted from the back. The use of CNC technology produces a perfectly flush panel fit and with a variety of panel options this is a very cost effective and increasingly popular alternative.

The third option is a one piece routed door in any of our 'Arborform' styles. (Refer to Arborform brochure).



Arborline Guarantee

All Arborline products are guaranteed in terms of the Consumer Guarantees Act. In addition to all other statutory rights and remedies the consumer has, Arborline voluntarily guarantees all its doors for 12 months subject to:

- (a) compliance by the consumer or consumer's agent with the terms regarding care and treatment.
- (b) such guarantee will be met at the option of Arborline either by repair or replacement or by an appropriate monetary refund.
- (c) Arborline is not liable for faults or defects occurring for reasons outside its control.

Company Profile

Formed in 1979 ARBORLINE PRODUCTS has established itself as one of New Zealand's leading door manufacturers. A family company, service and quality are paramount in our operation with customer requirements always being handled on a personal basis. Investment in leading edge technology has allowed ARBORLINE to be at the forefront of kitchen door trends and we are therefore also confidently committed to customer satisfaction.

Each door produced at our Hamilton factory is individually crafted by staff who take pride in the knowledge that their doors finish up in New Zealand's finest homes. ARBORLINE specialises in custom designed doors with a service guaranteed to satisfy all our customers.



Arborline Products Limited

P.O. Box 9003 Edgar St. Hamilton New Zealand
Ph: 07-847-8217 Free Fax: 0508-478-221
Fax: 07-847-8222 Email: sales@arborline.co.nz